

## CAREER OPTIONS



Truck Technician • Cargo  
Broker • Bus Technician •  
Rail Car Technician • Marine  
Vessel Repair • Generator Set  
Technician • Service Advisor •  
Heavy Equipment

## ANNUAL SALARY



Entry level to experience

**\$54,000 - \$116,000**

## INDUSTRY CERTIFICATIONS



Automotive Service Excellence (ASE)  
SP/2 Certificate  
Mobile Air Conditioning Society -609

## PROFESSIONAL ASSOCIATIONS



Automotive Service Excellence (ASE)  
Association of Diesel Specialists  
American Public Transportation  
Association  
California Transit Association  
National Alliance of Public  
Transportation Advocates

## estimated cost of TOOLS & SUPPLIES



Safety Glasses	\$1-45
Uniform Shirt	\$35-55
Uniform Pants	\$15-40
Work Shoes/Boots (oil and slip resistant)	\$30-200
Tools	\$500-\$3,500
Textbooks	\$600



Los Angeles Trade-Technical College

# HD TRUCK, TRANSIT, AND EQUIPMENT TECHNOLOGY

If you live in the United States, almost every single thing you eat, wear or use has been transported by diesel and alternative/green power vehicles.

Trucks, trains, buses and many other medium and heavy duty vehicles have evolved to match today's more stringent clean air emission standards. Graduates of the Heavy Duty Truck, Transit, and Equipment Technology program are well paid and have a diverse choice of areas in which to specialize. In recent years, local employers demand has exceeded our supply of qualified graduates as the program continues to grow.

After successful completion of the program requirements, students will become proficient in all aspects of diesel engine fundamentals, electrical components, fuel systems, overhaul procedures, air brake system and the construction and operation of diesel engines.



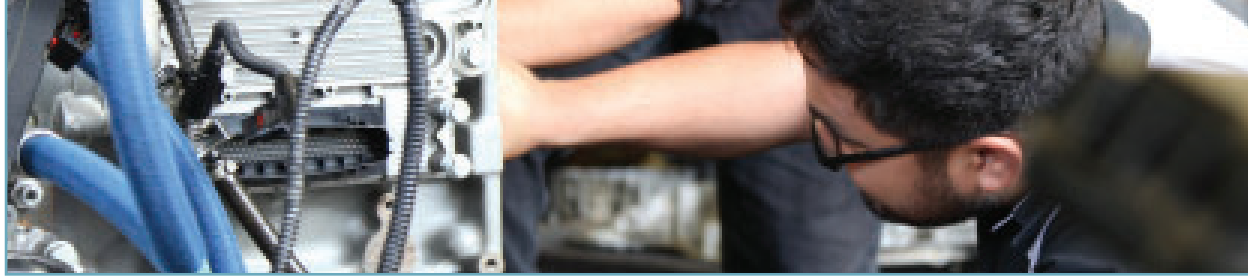
## Degree and Certificate

To earn an **Associate in Science degree** students should complete the 45 units of Required Courses with a "C" or better in each course, and the general education courses under the **GE Graduation Plan**.

Requirements for the **Certificate of Achievement** may be met by completing 45 units of Required Courses with a "C" or better in each course.

## STUDENT SUPPORT

The ATM Pathway Counselor can assist you plan your academic, transfer, and career success while connecting you to essential resources.



Award	Required Courses	Major Electives	GE Graduation Plan
○ Associate of Science Degree	48 units		~18 units
● Certificate: HD Truck, Transit, and Equipment Technology	48 units		
● Certificate: Truck and Transit Preventive Maintenance	24 units		

### Required Courses ○●

Term	Subject	Course Title	Units
Semester I	DIESLTK 112 ●	Heavy Duty Maintenance Shop Practices, Engine Fundamentals, and Electrical Systems	12
	-OR- 112A, 112B, & 112C		
	DIESLTK 112A	Heavy Duty Maintenance Shop Practices (4)	
	DIESLTK 112B	Heavy Duty Engine Fundamentals (4)	
	DIESLTK 112C	Heavy Duty Electrical Systems (4)	
Semester II	DIESLTK 122 ●	Heavy Duty Fuel Injection Systems, Hydraulics, and HVAC	12
	-OR- 122A, 122B, & 122C		
	DIESLTK 122A	Heavy Duty Fuel Injection Systems (4)	
	DIESLTK 122B	Heavy Duty Hydraulics (4)	
	DIESLTK 122C	Heavy Duty Heating, Ventilation, and Air Conditioning (HVAC) (4)	
Semester III	DIESLTK 132	Heavy Duty Transmissions, Brakes, and Suspension	12
	-OR- 132A, 132B, & 132C		
	DIESLTK 132A	Heavy Duty Transmission (4)	
	DIESLTK 132B	Air Brake Systems (4)	
	DIESLTK 132C	Heavy Duty Suspension and Steering Systems (4)	
Semester IV	DIESLTK 142	Heavy Duty Engine Overhaul, Electronic Engine Controls, and Emissions Systems	12
	-OR- 142A, 142B, & 142C		
	DIESLTK 142A	Heavy Duty Engine Overall (4)	
	DIESLTK 142B	Electronic Engine Controls (4)	
	DIESLTK 142C	Heavy Duty Emissions Systems (4)	

**IMPORTANT NOTE:** Students who have earned a grade of 'C' or higher in all first-year Diesel courses are eligible to advance to third-semester courses.

### GE Graduation Plan Courses ○

Meet with the ATM Pathway Counselor to select **Guided Choices** sequence of courses or other GE courses

Guided Choices	Units
	~18
Area A: Electronics 002	
Area B1: History 12	
Area C: Humanities 60	
Area D1: English 101	
Area D2: Mathematics 227	

Los Angeles Trade Technical College

**School of Advanced Transportation & Manufacturing (ATM)**

ATMPathway@lattc.edu | [www.lattc.edu/ATM](http://www.lattc.edu/ATM) | 213.763.7081

400 W. Washington Blvd. | Suite B1-225 | Los Angeles, California 90015



REV 08012024